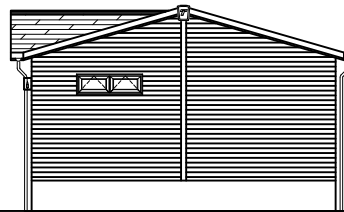
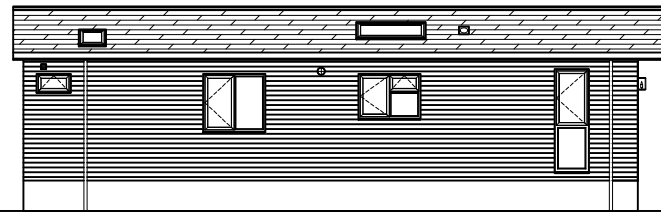




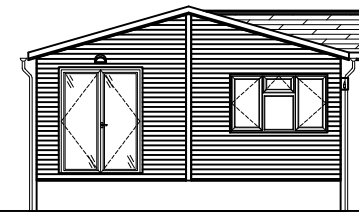
Front Elevation
Scale 1 : 150



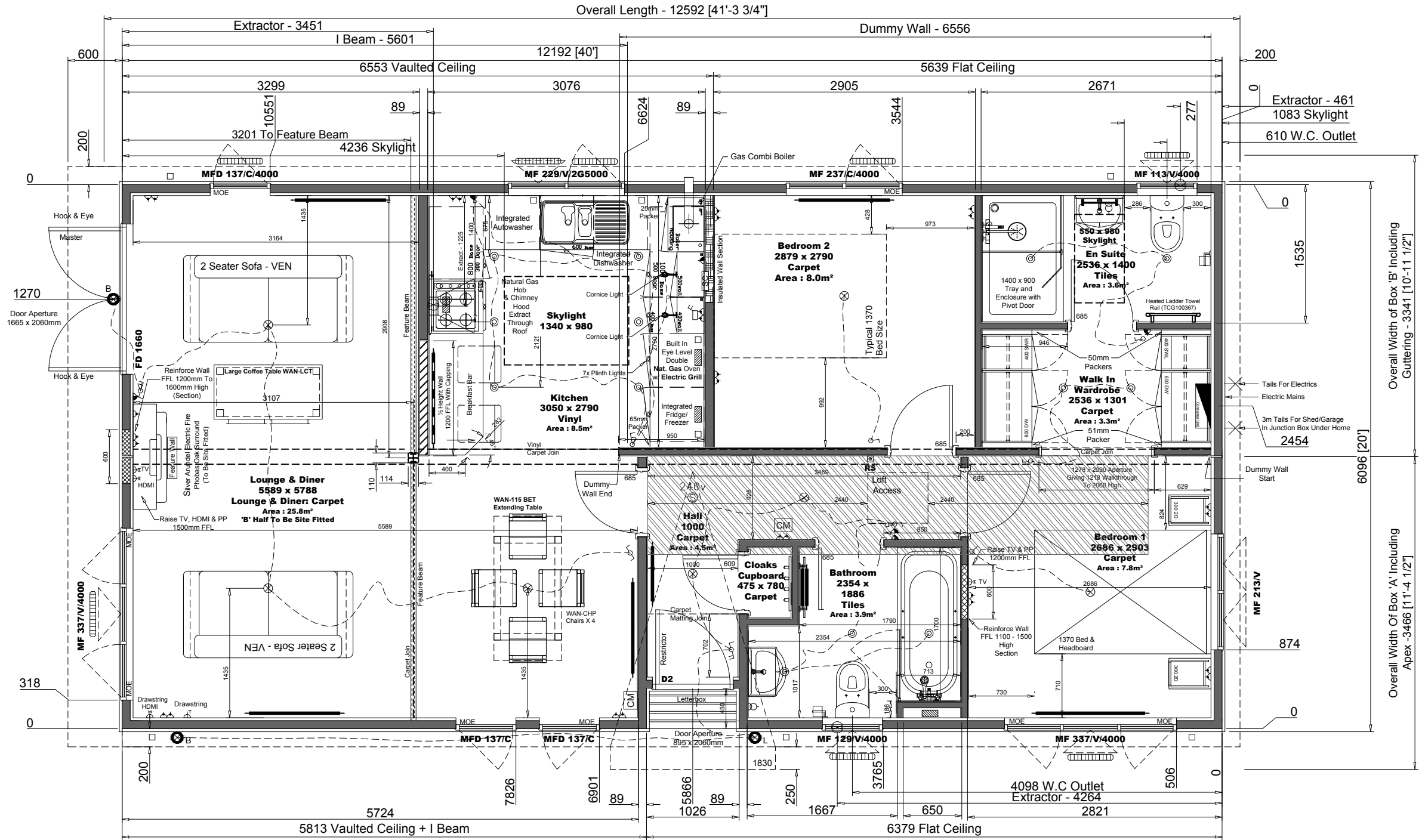
Side Elevation (Bedroom End)



Rear Elevation



Side Elevation (Lounge End)



Code:	Quantity:
D00302 F	15
D00302 F (Mill)	2
D00303 L	17
D00304 V	34
D00304 V (Mill)	2

Build Notes:
 16° Pitch Roof
 Loft Boarded 2440mm Either Side of Hatch As Design Permits
 Vaulted Ceilings To Lounge, Diner & Kitchen
 4x Steel Beams & 2x I Beams Required

Copyright Notice:
 This drawing and the information contained in it, is the property of Tingdene Homes Ltd. It may not be used, transmitted or reproduced, in whole or in part, without prior written consent from Tingdene Homes Ltd. Copyright ©.

Model:	Woodland Oak	
Size:	Metric: 12.192 x 6.096	Imperial: 40 x 20
Park:	Riverside Park	
Customer:	Show Home	

DOUBLE SWITCHED SOCKET	ELECTRIC TAILS ONLY	240V	SMOKE DETECTOR
SINGLE SWITCHED SOCKET	PENDANT LIGHT FITTING	ELECTRICAL CONSUMER UNIT	EXTERNAL POWER POINT
LIGHT SWITCH	BATTEN LIGHT FITTING	EXTERNAL LIGHT FITTING	IP RATED LIGHT FITTING
LIGHT SWITCH PULL CORD	TELEPHONE POINT	WASHING MACHINE PLUMBING	RADIATOR
FUSED SPUR	TELEVISION OR SATELLITE POINT	HEATING THERMOSTAT	EXTRACTOR FAN
COOKER SWITCH	CARBON MONOXIDE DETECTOR	EXTERNAL TAP	
DOWNLIGHT	WALL LIGHT		

RADIATOR SCHEDULE	
Lounge	2 x SS 60 100
Diner	SS 60 100
Kitchen	SS 60 100
Bedroom 1	SS 60 120
Bedroom 2	SS 60 100
Walk In Wardrobe	SS 50 30
Bathroom	SD 60 40
En Suite	TCG100367
Hall	SS 60 60
TRV's To All Rads (Except Hall)	

DATE DRAWN	BY
26.09.16	MD
1	01.11.16 MD CTB Amends
2	
3	
4	
5	
6	

Tingdene Homes Limited.
 Bradfield Road, Finedon Road Ind. Est., Wellingborough,
 Northants, NN8 4HB
 Tel: +44(0)1933 230100 Fax: +44(0)1933 272216
 www.tingdene.co.uk

Scale:	Sales No:	S.O. No:
1:50	Q16000272	160240_P

Support Drawings	
Description	DWG No.
Vaulted Walls	160240_VW
Vaulted Lights	160240_VL
Roof Extract	160240_RE
Tiled Walls	160240_TW

Transport Dimensions:
 Note: Weights are for Guidance ONLY

Height:	4.016
Width N/S:	3.466
Weight N/S:	7829
Width O/S:	3.341
Weight O/S:	8249
Band:	F
Axles:	2